



Interactive Wall Units - User Guide

This manual has been written to help you get the most from your Interactive Wall Units.

Please ensure that you read this fully as it contains important information on setting up your remote control. Failure to follow this advice may result in damage to the controller and may invalidate your warranty.

Keep this guide in a safe place for future reference.



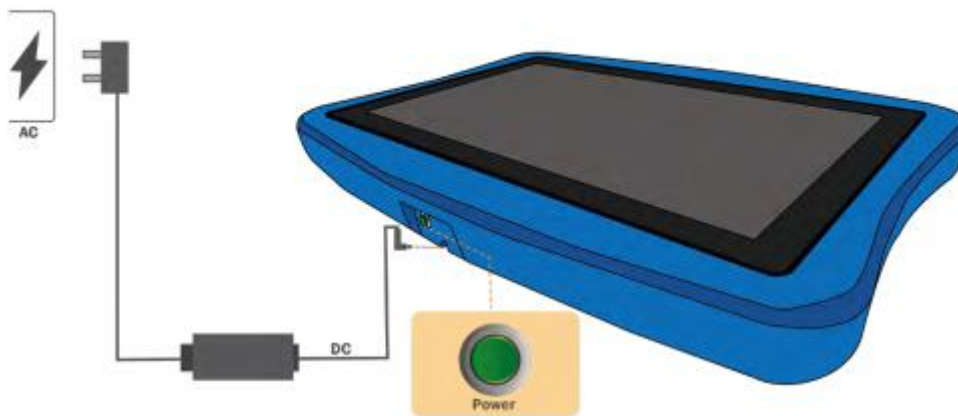
Safety Information

- Follow all the installation instructions carefully.
- This product is designed and intended for indoor use only.
- Do not expose this product to water or moisture in order to avoid fire and electric shock.
- Do not operate this product in a damp environment.
- Always place this product on stable and level surface.
- Always use this product at the indicated supply voltage only. Failure to do so may result in fire, electric shock, or product damage.
- Use only the included power cord, power plug or power adaptor. Use of other types of power cord, power plug, or adaptor may result in fire or electric shock.
- Always insert the power plug or power adaptor fully into the power outlet. Otherwise, it may result in overheating, electric shock or fire.
- If the power plug does not fit into the power outlet, contact a licensed electrician to replace the obsolete outlet.
- When unplugging the power plug or power adaptor, hold it by the plug. Do not pull on the power cord as it may damage to the power cord and may cause fire or electric shock.
- Do not bend or twist or place any heavy object on the power cord.
- Protect the power cord from being walked on or pinched particularly at plugs, convenience receptacles, and the point where they exit from the apparatus.
- Do not open or alter the casing of this product. Electric shock or injury may result.
- Do not attempt to repair, modify, or disassemble this product. If any part of this product is damaged or frayed, contact an authorized service representative.
- Never handle this product with wet hands as it may result in electric shock.
- Do not insert any metallic objects into this product or into a contact.
- Unplug the power plug or power adaptor before cleaning. Always use a dry, soft cloth for cleaning.
- If the product emits smoke, excessive heat, abnormal smell or unusual noise, turn off the product and unplug the power plug immediately. Contact an authorized service representative.
- Carefully locate any parts and/or accessories of this product to avoid potential tripping hazards.
- Do not operate this product at high temperature and/or high humidity environment. Application ambient conditions: Temperature: 0°C to 40°C; Non-condensing
- This product must be disposed in accordance with the relevant federal, state, and local laws and regulations.
- Never allow children to operate this product without proper adult supervision.
- Do not install this product except by qualified service personnel.
- Do not place this product near any heat sources above 100°C. Do not expose this product to excessive dust or vibrations, or high humidity, extreme cold or heat (such as in direct sunlight, near a heater, or near an air conditioning vent).
- Do not install this product where it would be exposed to direct sunlight or strong lighting.
- Do not place a heavy object on this product to avoid product damage.
- Do not pour or spray any liquid onto this product or its components. Accidental spillage of liquid into this product may cause serious damage. If this occurs, immediately turn off this product and unplug the power plug from the power outlet. Contact an authorized service representative for service.
- Unplug this product when unused for a long period of time. Take out all the batteries from any components of this product to avoid leaking. Do not use leaked batteries.
- Unplug the power cord before moving this product.

- If this product falls down, immediately turn off the product and unplug the power cord. Otherwise, it may cause fire or electric shock.
- Keep the writing surface clean.
- Turn off the product before cleaning.

Setting up

Cable Connection



- Connect the AC to DC Power Adapter to the power socket.
- Connect another end (DC cable) of the power adapter to the Wall Units.
- Please connect the power adapter before using the Interactive Wall Units.
- To turn on – press the green button at the back and wait for the android boot up.
- To turn off – press the green button at the back again.
-

Power Adapter Specification

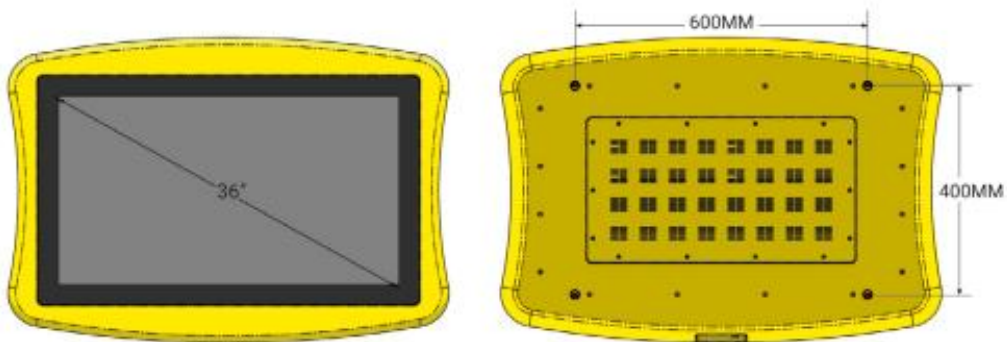
Voltage Input	100-240V, 50/60Hz, 1.5A
Voltage Output	19V
Current Output	5A

Android System Specification

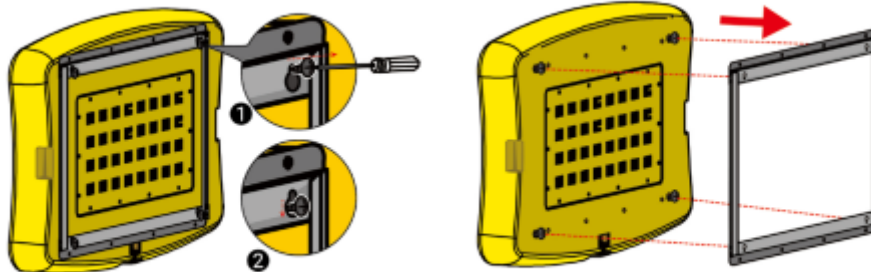
eFun Pad run in android 4.4. Here is the specification of the android system:

CPU	RK3399 Dual Cortex-A72 + Quad Cortex-A53, 64-bit CPU
GPU	Mali-T860 GPU
Operating System	Android 7.1
Memory (RAM)	DDR3 4GB
Storage	32GB
Wireless Connection	WIFI 802.11 b/g/n/ac 2.4G/5G Bluetooth 4.1

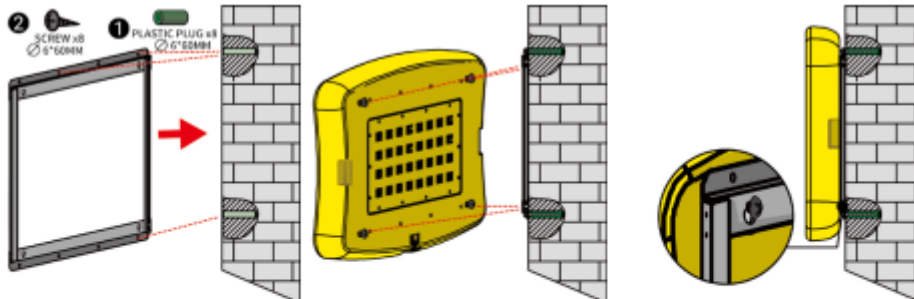
Installation



Square Wall Mount



- ① Please release the screws in the Square Wall Mount kit from the eFun Pad. ② Remove the Square Wall Mount from the eFun Pad.

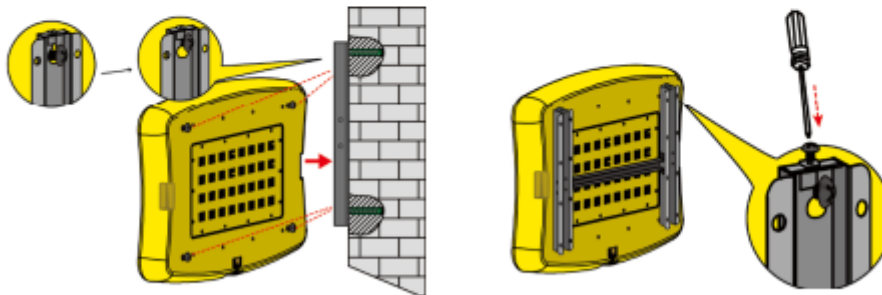


- ③ Install the Square Wall Mount attached to the wall. Please find the suitable wall to be installed and prepare the screws and plastic plug (or equivalent) to fix into wall. ④ Please hang the eFun Pad into the Square shape Wall mount with correct position. You may adjust the screw distance between the wall. Please assure for the safety lock to avoid the mounting unattached.

"H" Shape Wall Mount

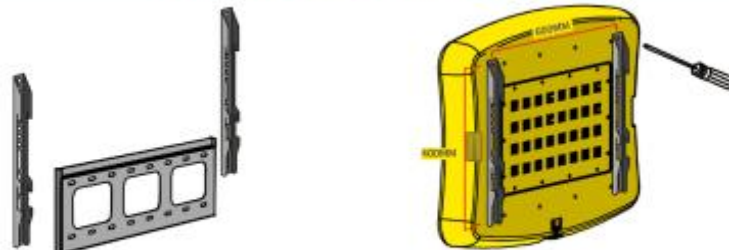


- ① Please take out the H Shape Wall Mount kit from the package. Please combine all the support mount into "H" shape mounting.
- ② Install the H Shape Wall Mount to the wall. Please find the suitable wall to be installed and prepare the screw and plastic plug (or equivalent) to fixed into wall.

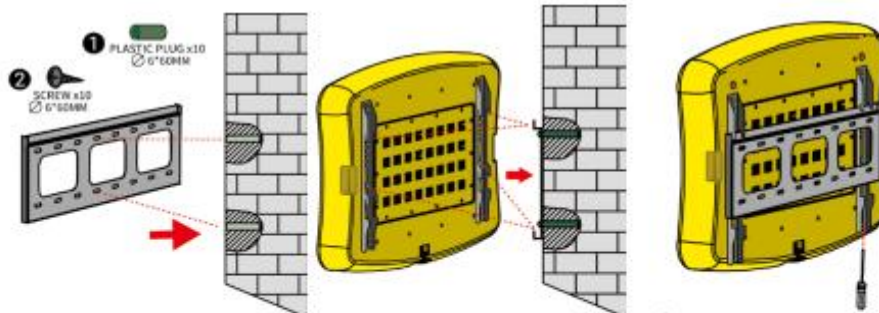


- ③ Please install the screws (x4 hole) from the eFun Pad and may adjust the screw distance between the wall. Please hang the eFun Pad into the "H" shape Wall mount with correct position.
- ④ After hanging the eFun Pad, assure for the safety lock to avoid the mounting unattached.

600x400 VESA Wall Mount



- ① Please take out the Wall Mount Bracket kit (optional) from the package.
- ② Install the Mounting Hook attached the hole from the eFun Pad back side (mount support as 400x600mm standard).



- ③ Install the Wall Mount Plate attached to the wall. Please find the suitable wall to be installed and prepare the screw and plastic plug (or equivalent) to fix the Wall Mount Plate into the wall. Once all fixed, please attach the Mounting Hook from eFun Pad to the Wall Mount Plate.
- ④ After hanging the eFun Pad, assure for the safety lock to avoid the mounting unattached.

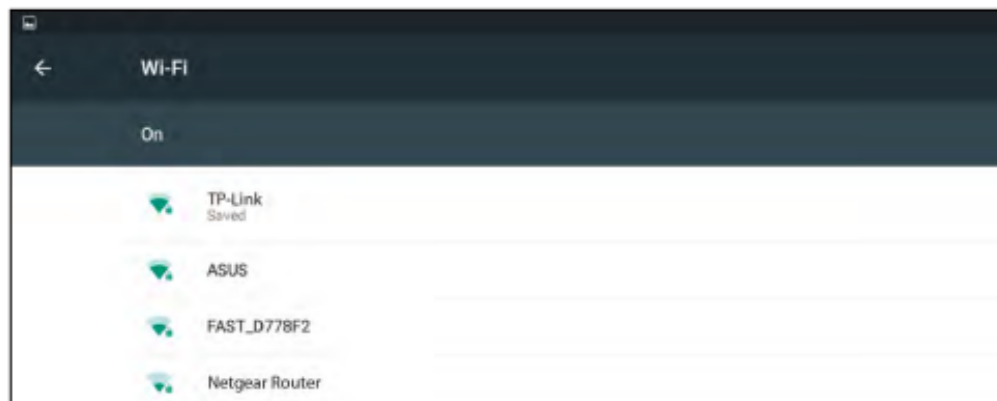
Basic Control of the Android System



Icon	Description	Function
	Capture	Screen Capture
	Return button	Back to the upper level directory
	Homepage button	Go to the Home Screen
	Program button	Open the recently used applications
	Rotate	Rotate Screen
	Volume decrease button	Decrease volume
	Volume increase button	Increase volume

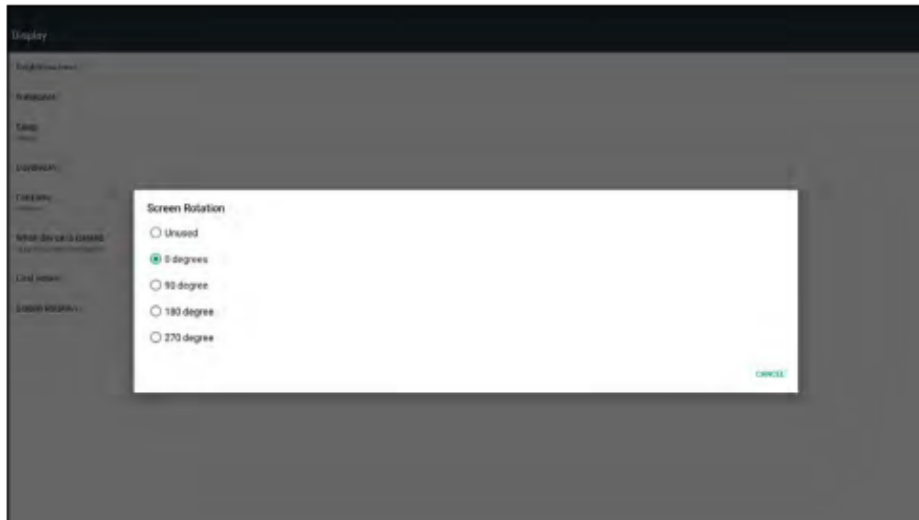
Connecting WIFI

Click on Setting



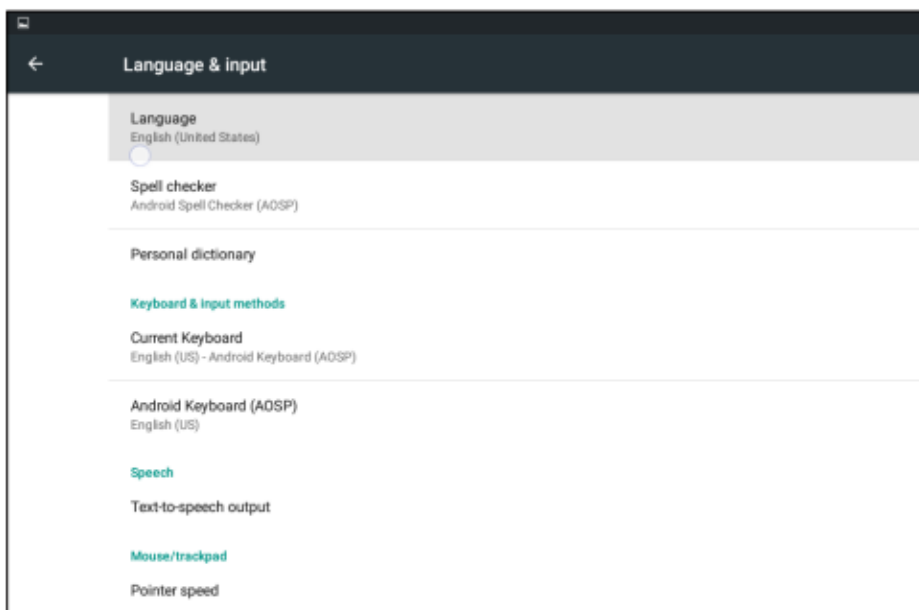
1. Turn on the WIFI, and then select the WIFI network to connect.
2. Enter the password if necessary.
3. The WIFI network will be saved after connecting successfully.
It will automatically reconnect the WIFI network for the next time.

Screen Rotation



To use with eFun Pad, it is recommend to use with screen rotation, you can rotate the screen directly on toolbar or you can go to setting > display > screen rotation to rotate the screen manually.

Selecting Language



1. To change to different language, go to Setting > language & Input.
2. Tap on "Language" to change the display language.
You may also change the Input & Keyboard language here.

WARNING

- Follow all installation instructions carefully.
- Ensure to handle with care during the installation, avoiding serious injury and/or product damage.

CAUTION

- Do not install this product in location where it may be exposed directly to sunlight, near heating equipment, or near air-conditioning vents.
- Do not install this product in strong sunlight or strong lighting location.
- Do not install this product in location where the temperature may change suddenly



Do not sit on top.



Do not jump on top.



Maxium weight: 40KG



Not for outdoor use.



Use under parental supervision.



Two people are required for lifting & moving.

Notices

Every effort has been made to ensure all information contained in this user guide is correct, but the accuracy or completeness is not guaranteed. Before using this product, you must evaluate it and determine if it is suitable for your intended application. You assume all risks and liability associated with such use. Any statements related to this product which is not contained in this manual or any contrary statements contained on your purchase order shall have no force of effect unless expressly agreed upon, in writing, by Sense Sensory.

The contents of this user guide are subject to change without prior notice.



Sense Sensory Limited

www.sensesensory.co.uk 01702 810016 info@sensesensory.co.uk